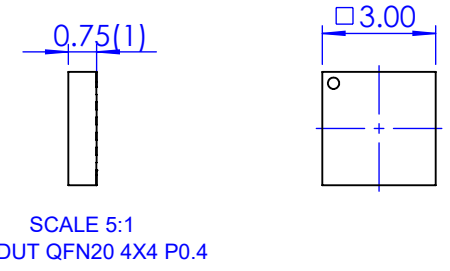
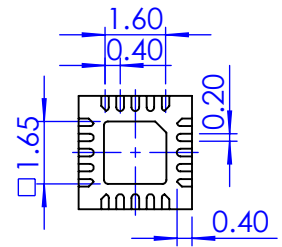
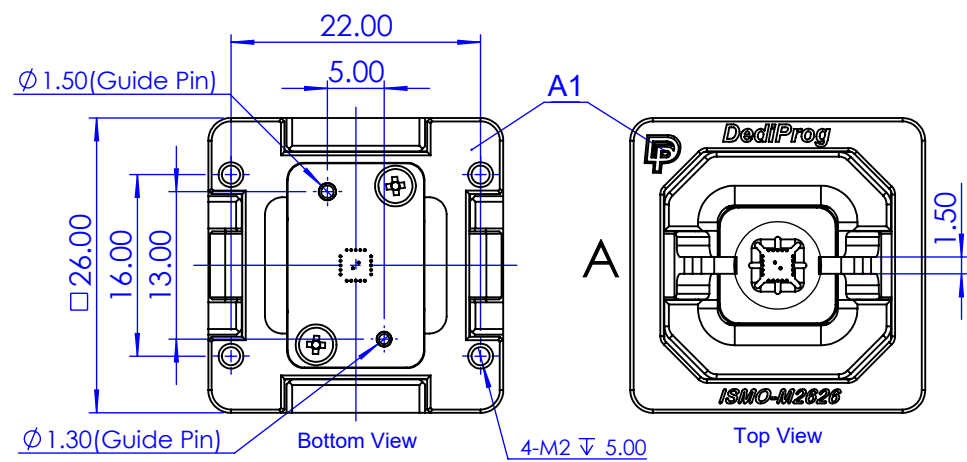
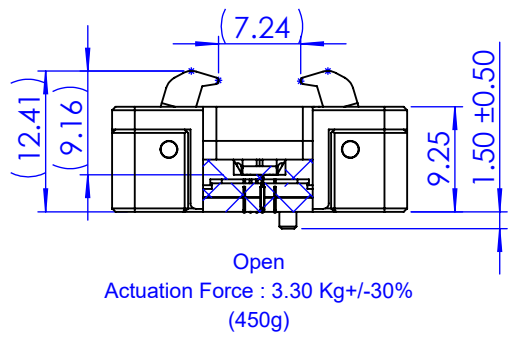


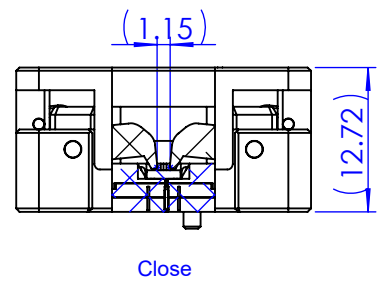
REV.	DESCRIPTION OF REVISIONS	DATE
01	INITIAL RELEASE	-
02	-	-
03	-	-
04	-	-
05	-	-
06	-	-



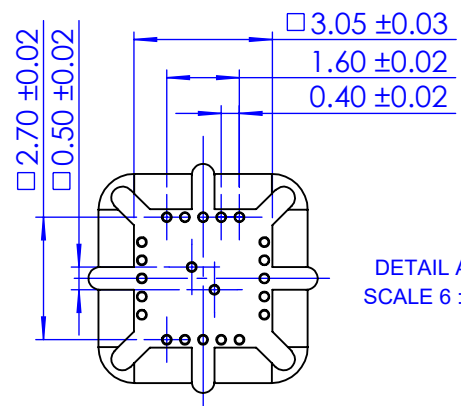
SCALE 5:1
DUT QFN20 4X4 P0.4



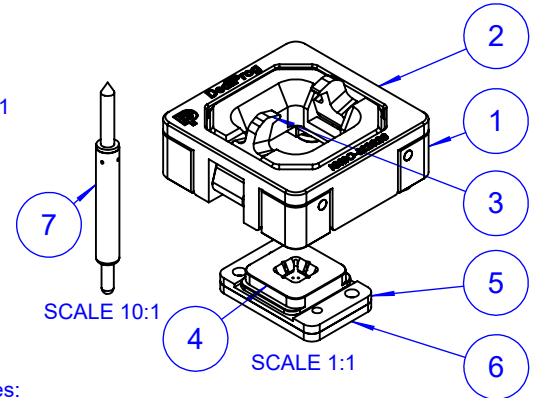
Open
Actuation Force : 3.30 Kg+/-30%
(450g)



Close

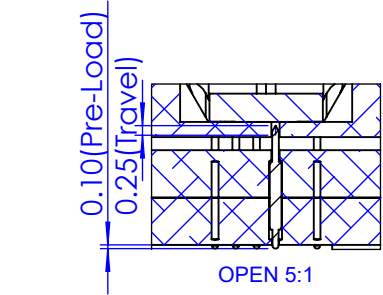


DETAIL A
SCALE 6 : 1

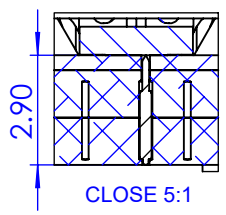


SCALE 10:1

SCALE 1:1



OPEN 5:1



CLOSE 5:1

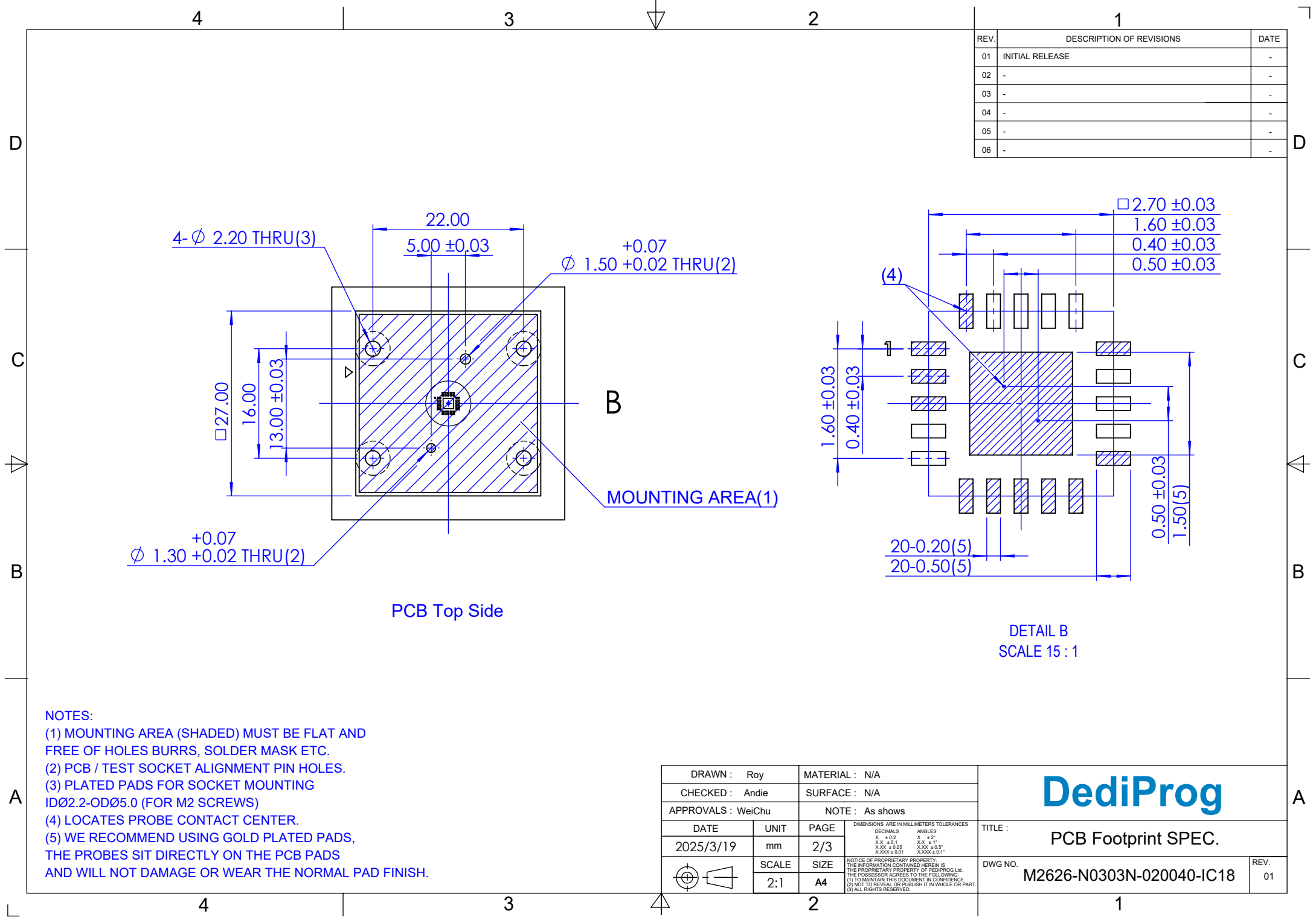
Probe spring force 25g at 2.90mm TEST HEIGHT

Item	Q'ty	Part Number	Material
1	1	M2626-P01-01	PEI
2	1	M2626-P02-01	PEI
3	2	M2626-P03-02E	PA6
4	1	M2626-N0303N-020040-P01-02	PEI
5	1	M2626-N0303N-020040-P02-02	PEI
6	1	M2626-N0303N-020040-P03-02	PEI
7	13	ID3-031325OR-P01C	

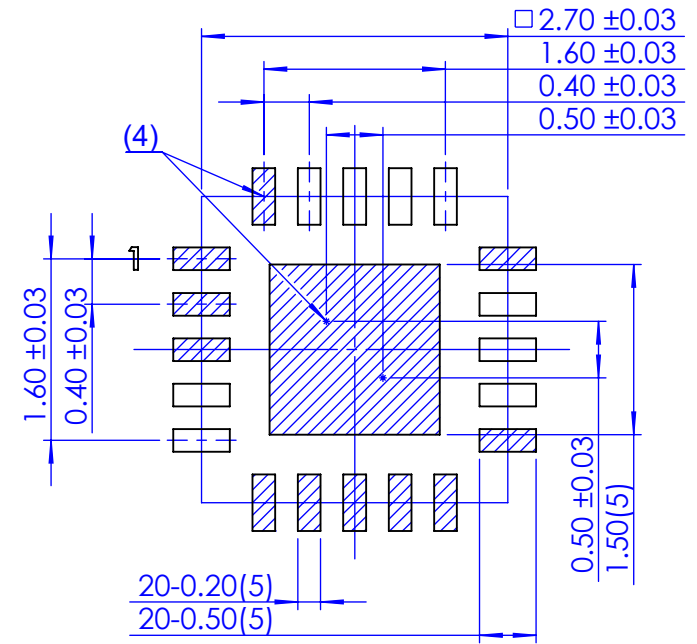
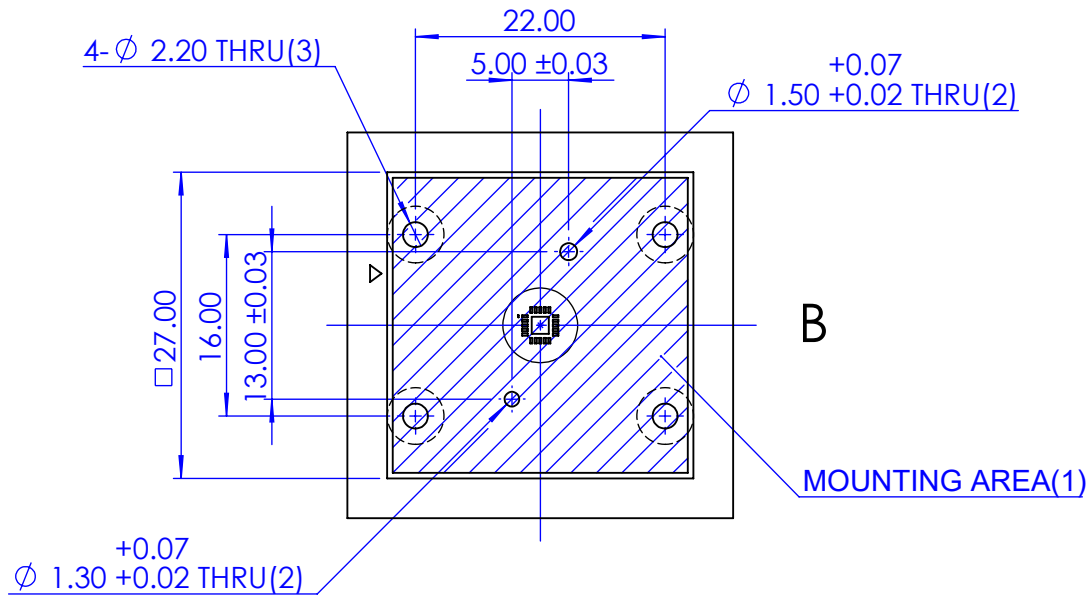
Notes:

- 1.Socket IC thickness range >0.40mm
- 2.Operation Temperature -40°C ~ 85°C
- 3.Insertion 50,000 Cycle (Mechanical)

DRAWN : Roy		MATERIAL : N/A		<h1>DediProg</h1>
CHECKED : Andie		SURFACE : N/A		
APPROVALS : WeiChu		NOTE : As shows		
DATE	UNIT	PAGE	DIMENSIONS ARE IN MILLIMETERS TOLERANCES	TITLE :
2025/3/19	mm	1/3	DECIMALS ANGLES X ± 0.2 X ° ± 2" XX ± 0.1 XX ° ± 1" XXX ± 0.05 XXX ± 0.5° XXXX ± 0.01 XXXX ± 0.1°	M2626 QFN20 4X4 Socket
SCALE		SIZE	NOTICE OF PROPRIETARY PROPERTY: THE INFORMATION CONTAINED HEREIN IS THE PROPRIETARY PROPERTY OF DEDI-PROG Ltd. THE POSSESSOR AGREES TO THE FOLLOWING: (1) TO MAINTAIN THIS DOCUMENT IN CONFIDENCE. (2) NOT TO REVEAL OR PUBLISH IT IN WHOLE OR PART. (3) ALL RIGHTS RESERVED.	DWG NO.
1.5:1		A4		M2626-N0303N-020040-IC18
				REV.
				01



REV.	DESCRIPTION OF REVISIONS	DATE
01	INITIAL RELEASE	-
02	-	-
03	-	-
04	-	-
05	-	-
06	-	-

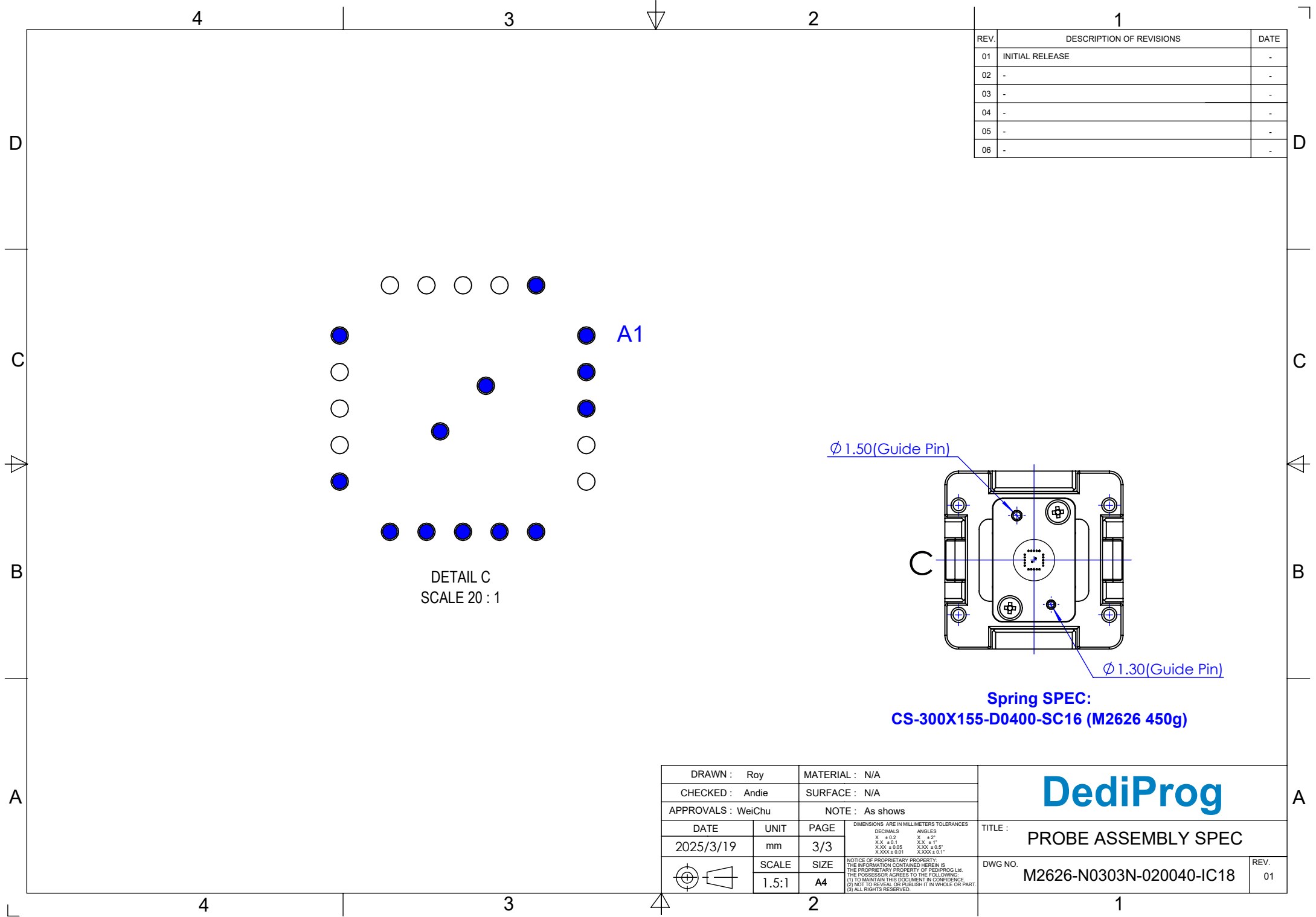


PCB Top Side

DETAIL B
SCALE 15 : 1

- NOTES:
- (1) MOUNTING AREA (SHADED) MUST BE FLAT AND FREE OF HOLES BURRS, SOLDER MASK ETC.
 - (2) PCB / TEST SOCKET ALIGNMENT PIN HOLES.
 - (3) PLATED PADS FOR SOCKET MOUNTING ID \varnothing 2.2-OD \varnothing 5.0 (FOR M2 SCREWS)
 - (4) LOCATES PROBE CONTACT CENTER.
 - (5) WE RECOMMEND USING GOLD PLATED PADS, THE PROBES SIT DIRECTLY ON THE PCB PADS AND WILL NOT DAMAGE OR WEAR THE NORMAL PAD FINISH.

DRAWN : Roy		MATERIAL : N/A		<h1>DediProg</h1>	TITLE : PCB Footprint SPEC.
CHECKED : Andie		SURFACE : N/A			
APPROVALS : WeiChu		NOTE : As shows			
DATE	UNIT	PAGE	<small> DIMENSIONS ARE IN MILLIMETERS TOLERANCES DECIMALS ANGLES X \pm 0.2 X \pm 2° XX \pm 0.1 XX \pm 1° XXX \pm 0.05 XXX \pm 0.5° XXXX \pm 0.01 XXXX \pm 0.1° </small>	DWG NO.	REV.
2025/3/19	mm	2/3		SCALE	M2626-N0303N-020040-IC18
		SIZE			
		2:1	A4		



REV.	DESCRIPTION OF REVISIONS	DATE
01	INITIAL RELEASE	-
02	-	-
03	-	-
04	-	-
05	-	-
06	-	-

DETAIL C
SCALE 20 : 1

Ø 1.50 (Guide Pin)

Ø 1.30 (Guide Pin)

Spring SPEC:
CS-300X155-D0400-SC16 (M2626 450g)

DRAWN : Roy		MATERIAL : N/A		<h1 style="margin: 0;">DediProg</h1>		
CHECKED : Andie		SURFACE : N/A				
APPROVALS : WeiChu		NOTE : As shows				
DATE	UNIT	PAGE	<small> DIMENSIONS ARE IN MILLIMETERS TOLERANCES DECIMALS ANGLES X ± 0.2 X ± 2° XX ± 0.1 XX ± 1° XXX ± 0.05 XXX ± 0.5° XXXX ± 0.01 XXXX ± 0.1° </small>		TITLE :	
2025/3/19	mm	3/3			TITLE :	
SCALE		SIZE	<small> NOTICE OF PROPRIETARY PROPERTY: THE INFORMATION CONTAINED HEREIN IS THE PROPRIETARY PROPERTY OF DEDI-PROG Ltd. THE POSSESSOR AGREES TO THE FOLLOWING: (1) TO MAINTAIN THIS DOCUMENT IN CONFIDENCE. (2) NOT TO REVEAL OR PUBLISH IT IN WHOLE OR PART. (3) ALL RIGHTS RESERVED. </small>		DWG NO.	REV.
1.5:1		A4			M2626-N0303N-020040-IC18	01